

RECYCLE RIGHT

✓ ALWAYS RECYCLE / RECICLE SIEMPRE



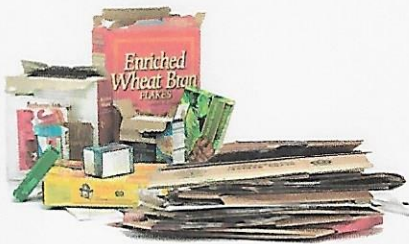
Plastic Bottles & Containers
Botellas y envases de plástico



Food & Beverage Cans
Latas de alimentos y bebidas



Paper
Papeles



Flattened Cardboard & Paperboard
Cartón y cartulina aplastados



Glass Bottles & Containers
Botellas y envases de vidrio

✗ DO NOT INCLUDE IN YOUR MIXED RECYCLING CONTAINER / NO INCLUIR EN SU CONTENEDOR DE RECICLAJE MIXTO



NO Food or Liquids
NO comida o líquidos



NO Foam Cups & Containers
NO vasos y recipientes de poliestireno



NO Loose Plastic Bags, Bagged Recyclables or Film
Empty recyclables directly into your bin.
NO bolsas y envolturas de plástico sueltas, o materiales reciclables embolsados
Vací directamente los materiales reciclables en nuestro carrito



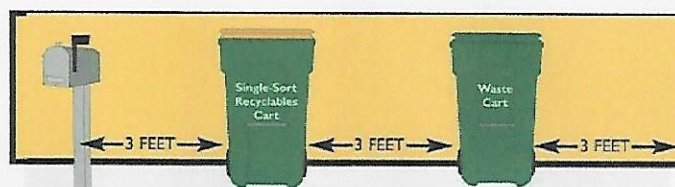
NO Batteries – check local drop-off programs for proper disposal
NO baterías - Verifique los programas locales de entrega para su correcta eliminación



NO Green Waste
NO desechos verdes



NO Clothing, Furniture & Carpet
NO ropa, muebles y alfombras



MOST COMMON CONTAMINANTS

Keep these common contaminants OUT of your recycling bin.



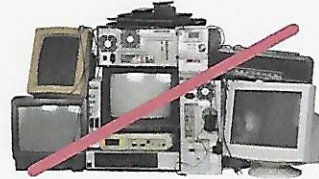
NO RECYCLABLES IN PLASTIC BAGS

Empty recyclables directly into your bin and leave the plastic bag out.



NO FOOD & LIQUIDS

Compost instead! Otherwise it belongs in the trash.



NO ELECTRONICS & SMALL APPLIANCES

Donate if in good condition, or schedule a bulky item pickup, if available. **Check earth911.com** for a local drop-off site.



NO TEXTILES, BEDDING, RUGS & CARPET

Donate these items if they are in good condition. Large quantities may require special disposal.



NO TANGLERS, HOLIDAY LIGHTS, HANGERS & EXTENSION CORDS

They wrap around equipment and can shut down an entire facility! They all go in the trash.



NO PLASTIC BAGS, FILM/SHEETING & FLEXIBLE FILM PACKAGING

Take plastic bags back to local retailers to keep them out of the recycling stream. Visit plasticfilmrecycling.org to find a drop-off location near you.



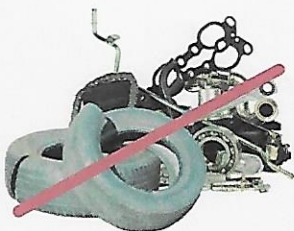
NO PAPER NAPKINS, PLATES, CUPS & TISSUES

Compost if possible, and remember to recycle the cardboard tube.



NO POLYSTYRENE FOAM

Foam and plastic containers are not recyclable curbside. Find drop-off programs for items like foam packing peanuts at earth911.com.



NO TIRES, AUTO PARTS & SCRAP METAL

(Not in recycling or trash.) All can damage equipment and are safety hazards. Contact your local scrap recyclers or retail tire stores for recycling options, or check earth911.com for a drop-off center near you.



NO CONCRETE, WOOD & CONSTRUCTION DEBRIS

Can damage equipment & are safety hazards. You may be able to schedule a bulky item pickup - otherwise throw it in the trash or order a roll off bin by contacting Waste Management Customer Service.



NO YARD WASTE & WOOD

Compost or put in your yard waste cart, if available. Otherwise it belongs in the trash.



NO NON-RECYCLABLE PLASTIC

Not everything that is plastic is recyclable! Recycle only food & beverage bottles, jugs and tubes.

To learn more, visit
wm.com/recycleright



SINGLE STREAM SPECIFICATIONS

RECYCLABLES must be dry, loose (not bagged), unshredded, empty, and include **ONLY** the following:

Aluminum cans	Newspaper
PET bottles with the symbol #1 – with screw tops only	Mail
HDPE plastic bottles with the symbol #2 (milk, water bottles detergent, and shampoo bottles, etc.)	Uncoated paperboard (ex. cereal boxes; food and snack boxes)
PP plastic bottles and tubs with symbol # 5 - empty	Uncoated printing, writing and office paper
Steel and tin cans	Old corrugated containers/cardboard (uncoated)
Glass food and beverage containers* – brown, clear, or green	Magazines, glossy inserts and pamphlets

NON – RECYCLABLES include, but are not limited to the following:

Plastic bags and bagged materials (even if containing Recyclables)	Microwavable trays
Porcelain and ceramics	Mirrors, window or auto glass
Light bulbs	Coated cardboard
Soiled paper, including paper plates, cups and pizza boxes	Plastics not listed above including but not limited to those with symbols #3*, #4*, #6*, #7* and unnumbered plastics, including utensils
Expanded polystyrene	Coat hangers
Glass and metal cookware/bakeware	Household appliances and electronics,
Hoses, cords, wires	Yard waste, construction debris, and wood
Flexible plastic or film packaging and multi-laminated materials	Needles, syringes, IV bags or other medical supplies
Food waste and liquids, containers containing such items	Textiles, cloth, or any fabric (bedding, pillows, sheets, etc.)
Excluded Materials or containers which contained Excluded Materials	Napkins, paper towels, tissue, paper plates, and paper cups
Any paper Recyclable materials or pieces of paper Recyclables less than 4" in size in any dimension	Propane tanks, batteries
Cartons*	Aseptic Containers*